



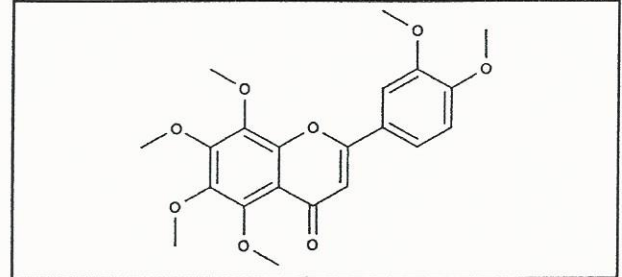
INDOFINE Chemical Company, Inc.

121 Stryker Lane, Bldg. 30
Hillsborough, NJ 08844 USA
Phone: (908) 359-6778; Fax: (908) 359-1179

Certificate Of Analysis

021348S**NOBILETIN****Lot No.: 16061602**

CAS RN	478-01-3
MOL FORMULA	C ₂₁ H ₂₂ O ₈
MOL WEIGHT	402,40



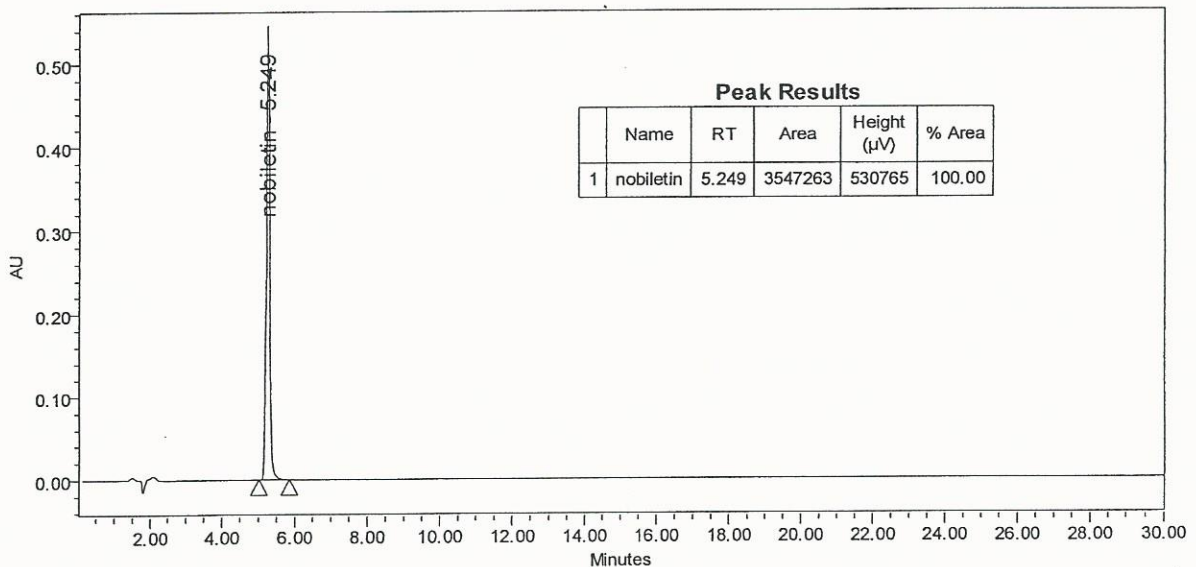
TEST	METHOD	UNIT	SPECIFICATION	RESULT
Appearance	Visual		White to beige powder	Conform
Water content	KF	% w/w		< 0,2
Residual solvents	GC-HS	% w/w		< 0,1
Inorganics	ICP-MS	% w/w		< 0,1
Purity	HPLC	% area	≥ 99,0	100,0
Assay	Calculated (*)	% w/w		100,0

(*) Assay = Purity by HPLC x (100 - %water - %solvents - %inorganics)

CHROMATOGRAPHIC PURITY / HPLC

Column : Symmetry Shield RP18 - 4,6x150 mm - 3,5 μm
Mobile phase : Water + 5% AcOH 55 / ACN 45 (v/v)
Detection : UV 254 nm

Temperature : 30°C
Flow rate : 1 ml/min
Injection volume : 5 μl
Injection solvent : EtOH



LONG TERM STORAGE : Below 8°C in a dry and dark place